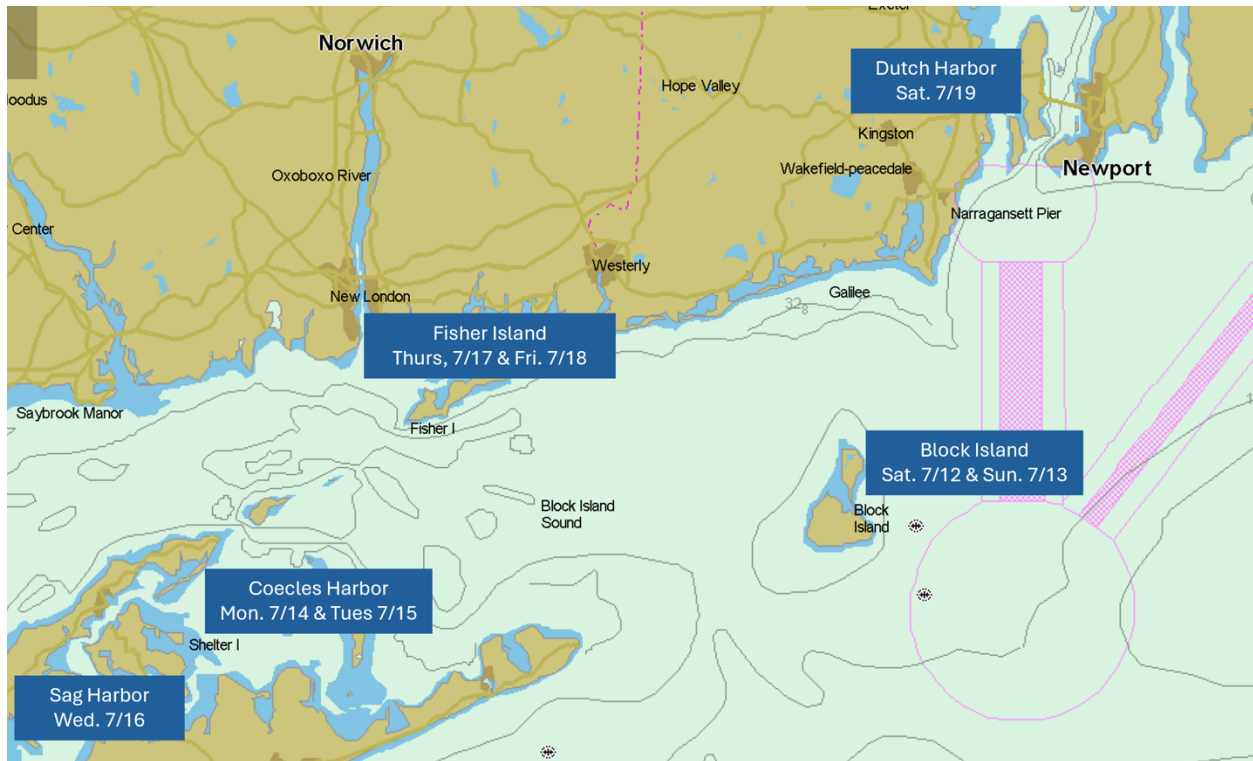


Bristol Yacht Club – Annual Summer Cruise

July 12 – 20, 2025 (Version 2.0)



Day	Date	From	To	NM Distance	Group Activities
Saturday	7/12/25	Bristol	Block Island	33	Casual Gathering at The Oar
Sunday	7/13/25	Block Island	Block Island	0	Dinner at Dead Eye Dicks
Monday	7/14/25	Block Island	Coecles Harbor	34.8	Potluck at the Coecles Harbor Boatyard
Tuesday	7/15/25	Coecles Harbor	Coecles Harbor	0	Dinner at The Rams Head Inn
Wednesday	7/16/25	Coecles Harbor	Sag Harbor	6	Dinner at Il Cappuccino
Thursday	7/17/25	Sag Harbor	Fishers Island	22.2	Potluck at the FIYC
Friday	7/18/25	Fishers Island	Fishers Island	0	Do-Your-Own-Thing
Saturday	7/19/25	Fishers Island	Dutch Harbor	34.5	Pizza at the Dutch Harbor Boatyard
Sunday	7/20/25	Dutch Harbor	Bristol	13.6	(Welcome Home!!)

Communication

The Fleet and Day Captains will monitor VHF channel 72 for official cruise business throughout the cruise, from sunrise to sunset. You can reach Fleet Captain Barbara Petrocelli at 516-313-0263 if you need immediate assistance. There will be a daily check-in initiated by the day captain of that port at 0800 on Channel 72 to review current conditions, discuss any last-minute sailing and evening activity updates, and answer questions. If the departure time changes to earlier than 8:00 due to tides or other factors, the new call time will be announced the evening prior.

If you decide not to go to a port you signed up for, please notify either the Fleet Captain or the Day Captain for that port.

Flags

Please fly your Bristol Yacht Club burgee night and day so that other boats in the cruise can recognize you. Other signals may be flown at each skipper's discretion.

Navigation meetups

Skippers who wish to discuss the next day's course options should notify the day captain for that port. They will review the options with you or seek assistance from someone else. During the daily 0800 a.m. call, a brief review of the course and any special conditions to be aware of will occur.

Thank You!

Many thanks to the BYC Cruise Committee and Staff who have worked diligently to organize this cruise. It is a significant effort for which we are all very grateful!

DINGHY DASH IS READY TO HELP!

Need ice? Hungry for a snack? Trash piling up? Pup needs a stroll?

We've got you covered — and we'll dash it to you by dinghy!

Services Include:



Ice Delivery



Food Delivery



Trash Pickup



Dog Walking



Need Something else? Just Ask!!

Run by sisters Alana, Addison & Avaleen Aroy,
aka The Petaja's granddaughters.

We will announce our hours on the 8AM report each day
during the cruise but you can also reach out anytime!

Call or Text: 239-286-2825

Block Island

(Day Captain: Barbara Petrocelli and Carol McFarland)

Getting There

Distance: 33 NM

Tides/Currents: High tide is at 0938 in Bristol Harbor and 0933 in Newport on 7/12. Low tide is at 1500 in Newport and 1445 on Block Island on 7/12. A favorable ebb tide should carry cruisers south from Bristol through Narragansett Bay and Rhode Island Sound to New Harbor on Block Island from around 0938 to 1445 on 7/12.

Accommodations

If you have reserved a mooring, your mooring/rafting assignment is provided on the next page of this cruise guide. If you have a reserved mooring, upon entering New Harbor on Block Island, please call the Harbormaster on VHF CH 12, state that you are with the BYC regatta, and have been assigned (input mooring number). The Harbormaster's Crew will direct you to the mooring for you to pick up. If you have an estimated time of arrival that day, please contact the Harbormaster at 401-466-3204 or VHF CH 12 so they can be prepared to receive you. The mooring fee covers trash disposal, pumpout service, and 2 shower tokens per day.

Any vessel that has not reserved a mooring ahead of time will need to either try and get a Town mooring on a FCFS basis. Slips can be reserved through Dockwa, and there is also a large anchorage area.

Oldport Launch is a separate entity, and they are on VHF CH 68. It is \$5.00 per head. The Town of New Shoreham provides a free pumpout boat service to all vessels in New Harbor. Pumpout service is available seven days a week. Call pumpout on VHF CH 73. Free garbage disposal and recycling services are available at the Public Boat Ramp by BIMBI.

Bathroom facilities are located at the Fred Benson Town Beach Pavilion, Old Harbor Dock, and next to Block Island Maritime Institute in New Harbor. Showers are available at Town Beach Pavilion from 0900 to 1700 from June 14 to September 2, and at Old Harbor Dock 24 hours per day starting Memorial Day. Shower tokens are available at the Town Beach and the Old Harbor Dock. Rental mooring customers are entitled to two complimentary tokens with a valid mooring receipt. Additional tokens are available for \$2.00 each.

Ice is available at all marinas, and water can be delivered to boats in New Harbor by hailing the Water Boy on VHS CH 71 or via DinghyDash.

Here are the mooring/rafting assignments:

Mooring #	Boat Name	Boat Length	Boat Draft	Boat Width	Rafted With
117	Alice too	31	4 1/2 feet	11 ft	Tom Foolery
188	Allegro	43	5'-8"	12'-6"	Tilloo
135	Blessings	38	5.5	12.5	SISU
240	Blue Devil	36	6.5	12	True Love
161	Blue Moon	40	6	13	Restless
153	Boondoggle	38	4ft	21ft	CurtisSea
250	Cetus	36	7' 2"	11.5'	Kestrel
152	Charmer	40	4	11 1/2	Promise
153	CurtisSea	40	5	14	Boondoggle
469	Dovetail	53	7'	16'	(No Rafting)
208	Ginger Beer	35	3	12	The Red Herring
250	Kestrel	36	6.33'	11.25'	Cetus
113	Mind Eraser	28	5	10	Time Out
152	Promise	38	5	12	Charmer
215	Rebel	50	4	17	(No Rafting)
161	Restless	36	5	12	Blue Moon
135	SISU	37	5 foot	12.4 feet	Blessings
135	SISU	37	5 foot	12.4 feet	(no rafting)
420	Snowdance	39	5'6"	12'4"	Tranquility
205	Tenacity	34	3'	14'	Zebulun
208	The Red Herring	28.5	2'	Power Boat	Ginger Beer
188	Tilloo	36	6	13	Allegro
113	Time Out	30	5.5	10	Mind Eraser
117	Tom Foolery	34	6'6"	11	Alice Too
420	Tranquility	38	6	12.5	Snowdance
240	True Love	36	6.5	11	Blue Devil
205	Zebulun	35	6.5	12	Tenacity

Gray indicates a vessel that is renting a mooring for only one night.

Gatherings

Cruisers are invited to meet at The Oar on Saturday at 1700 for dinner and drinks. They do not accept reservations so we will have to play it by ear on getting in, depending on crowd size. Weather permitting, we will sit outside on the picnic tables and play cornhole.

On Sunday night, we will meet for dinner in three seatings, each for twenty guests, at 1700, 1815 and 1915. Participants will order from the menu and pay at the table. Cruisers should have selected if they want to join the dinner and which seating they prefer through the cruise sign-up form.

Activities

Block Island offers an abundance of hiking, fishing, bike and moped rentals, paddle boarding, dining, and shopping opportunities. Below is a curated list of key businesses along with their contact information. Learn more at Block Island's official visitors website—[link](#).

Aldo's Bike/Moped 466-5018
BI Bike & Car Rental 466-2297
Boat Basin Bike Rentals 466-2631
Moped Man 466-5822
Old Harbor Bike Shop 466-2029

BI Grocery 466-2949
BI Depot 466-2403
McQuade's Pharmacy 596-0277

Dick's Fish Market 466-2042
Island Hardware 466-5831

BI Marine Repair CH 12 466-2028
Edwards Marine CH 12 466-2655
TMT Diesel 276-345-8433
Peter Mott Marine Repair 466-5139
Littlefield & Sons Propone 466-2388
Hull Suburban Propane 466-59

Coecles Harbor

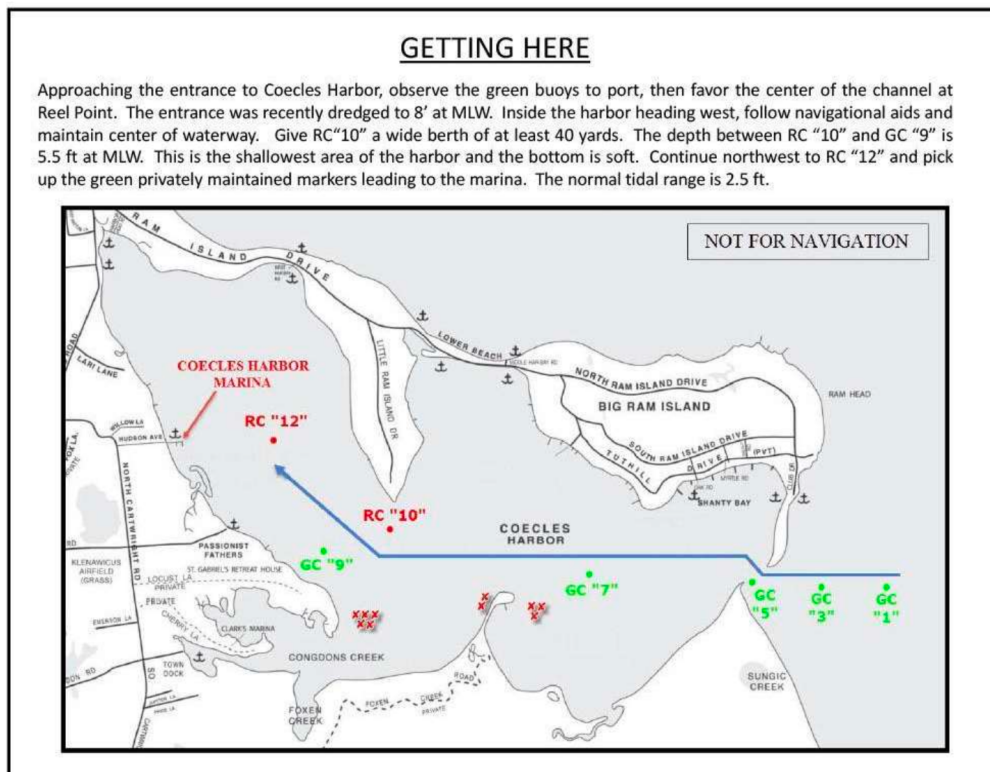
(Day Captain: Tom Dawson)

Getting There

Distance: 34.8 NM

Tides/ Currents: On July 14, low tide will occur at 0450, and high tide will occur at 1134 at the opening to New Harbor/Great Salt Pond on Block Island. Low tide will be at 0713, and high tide will be at 1337 at the entrance to Gardiners Bay. From 0900 to 1430, a flood tide should create a moderate current (.4 – 1.9 knots) that will carry cruisers west or northwest (depending on the particular point) from Block Island towards Coecles Harbor. After 1430, the current will become easterly or southeasterly as the ebb tide begins. Cruisers should choose a course well south of The Race (LAT/LON: 41.2282° N 72.0625° W) to avoid the effects of the strongly northwest current in that area. That current will peak at 1155 with a 3.77 knot current at 291°.

Arrival: The chart below illustrates the preferred entrance to Coecles Harbor. For vessels with a draft of 6 feet or more, the anchorage area is the best option. The anchorage zone is marked south of green can “7.” Others can choose to either anchor or stay at Coecles Harbor Marina, which offers both slips and moorings. High tide, the optimal time to enter Coecles Harbor, will occur at approximately 1500 on 7/14. Entering Coecles Harbor requires careful attention to your position to avoid drifting outside the channel and hitting soft sand. It’s wise to occasionally check behind you to ensure you remain within the channel.



Accommodations

Coeclles Harbor Marina and Boatyard (CHM&B) will hold a block of 14 moorings until 6/1, which cruisers can reserve via Dockwa. When making a reservation via Dockwa, cruisers should mention that they are BYC members. After 6/1, CHM&B will release all moorings, which may sell out. Launch service is not available. There is a dinghy dock that all visiting BYC members are welcome to use, including those renting a CHM&B mooring and those anchoring.

When you arrive, contact the CHM&B dock crew on VHF CH 09 or call 631.749.0700 for your mooring assignment.

CHM&B offers visitors bathrooms and showers, a laundromat, free WIFI, ice, van service, and bike rentals. Fuel and water are available at the CHM&B dock.

CHM&B has a pool which all visiting BYC members are welcome to use, including those renting a CHM&B mooring and those anchoring. The pool is open from 1000-1700 and there are lounge chairs etc. for enjoying the sun. Please do not bring any food or any glass containers into the pool area. There is no lifeguard, so no drowning!! 😊

Gatherings

On Monday, July 14, we will gather at Coecles Harbor Marina for a drink of the day and potluck dinner at 1700. While CHM&B has several picnic tables reserved for us, please bring folding chairs if you have them, as we may need additional seating. There are charcoal grills that we are welcome to use. Charcoal will be provided.

On Tuesday, July 15, we will have a group dinner at The Rams Head Inn at 1830. We will meet at 1745 in the bar for drinks and will be seated for dinner at 1830. Participants will order off the menu and pay at the table. Cruisers should have signed up to attend this dinner during the cruise sign-up process. There will be options for vegetarians, gluten-free diners, and children.

BYC cruisers can get to The Rams Head Inn by sea or by land. For those who want to travel by sea, please note that the trip from the CHM&B to the dinghy dock at The Rams Head Inn is 1.3 NM. The trip from the anchorage area to The Rams Head Inn is .61 NM. The Rams Head Inn has a dinghy dock where we can tie up during dinner.

For those who want to travel to The Rams Head Inn by land, please note that the CHM&B will provide BYC cruisers with rides to The Rams Head Inn in their 9-person van at no charge, starting at 1730 on 7/15. To return to the CHM&B after dinner, cruisers will need to contact Marsha Petaja by 1000 on 7/15 to reserve space in this transportation back to the marina following dinner. She will make a reservation for van service and coordinate the pickup with the Shelter Island Transportation Service. There will be a fee of approximately \$20 per person for this service.

Activities

Paddle Board and Kayak Rental – [link](#)

Mashomack Preserve, a Nature Conservancy property - [link](#)

Sylvester Manor - [link](#)

Shelter Island Historical Society - [link](#)

Shelter Island Craft Brewery- [link](#)

Taylor Island: Taylor Island (or Cedar Island as it is also called) is open to explore to the general public. You can take your dinghy to the shore and explore the beautiful grounds and home. Please leave the island the way you found it so that others can continue to enjoy it.

Congdons Creek: Congdons creek is located in the southwest corner of the harbor, just beyond Taylor Island. It is full of wildlife and is great for curious explorers. It also is the home of many of the local fishing boats for Shelter Island. Clarks Marine and a town landing are also located in this creek.

Sag Harbor

(Day Captain: Bill Barlow)

Getting There

Distance: 6 NM

Tides/ Currents: High tide is at 0430 and low tide is at 1019 off Cedar Point on July 16. On July 16, the current between Mashomack Point and Cedar Point will flow southwest from Gardiners Bay into Sag Harbor Bay from 1019 to 1703, peaking at a maximum rate of around 2.58 knots at 1307.

Accommodations

Sag Harbor's municipal marina, known as the Sag Harbor Village Marina, offers four moorings for rent through Dockwa. The Sag Harbor Launch Service provides additional rental moorings via Dockwa in the outer harbor, which is sheltered by breakwaters to the north and east. Slips are also available at the town docks and various private marinas. Additionally, there is a good holding ground for those wishing to anchor in an area just northeast of the breakwaters.

Dock personnel at the Sag Harbor Village Marina monitor VHF CH 9, while the Harbormaster monitors Channel 16. The Sag Harbor Launch Service monitors CH 73. A free pump-out service is available. Heads and showers are offered for guests at the Sag Harbor Village Marina and mooring field. Potable water is accessible for vessels in the Sag Harbor Village Mooring Field. There is free WiFi and a dumpster for cruisers to deposit trash near the transient dock. A public dinghy dock is located at the south end of the transient dock.

Gatherings

We will gather for a group dinner at Il Cappuccino (30 Madison Street, Sag Harbor, New York, (631) 725-2747) on Wednesday night at 1800. For adults, the dinner costs \$60 per person and includes a three-course meal (salad, rolls, entrée, dessert, coffee/tea, tax, and tip). Drinks will be ordered and paid for separately. Children can order off the menu. Cruisers should have signed up to attend this dinner and chosen their entrées from three options during the cruise sign-up process. Cruisers will pay for their meals at the table.

Activities

Sag Harbor Whaling and Historical Museum – [link](#)

Sag Harbor Customs House – [link](#)

Sag Harbor Historical Museum - [link](#)

Big Olof Ice Cream (Wharf St, Sag Harbor, NY 11963)

Fishers Island

(Day Captains: Jeri and Steve Devin)

Getting There

Distance: 22.2 NM

Tides/Currents: High tide in Sag Harbor Bay and between Mashomack Point and Cedar Point will be around 0524. Low tide will be around 1111. On July 17, a favorable modest ebb tide should carry cruisers north and east from Sag Harbor Bay towards The Race from around 0524 through late morning (depending on the particular location). From 0451 to approximately 1100 the current at The Race will be flowing southeast (106°), from Long Island Sound towards Block Island Sound. Slack tide will be at 1124. From 1124 to approximately 1730, the current flow will flow northeast (291°), peaking at 4 knots at 1424. Cruisers may want to time their passage through The Race to coincide with slack tide at 1124 or shortly thereafter when the current in a northwesterly direction will be favorable. For example, leaving Sag at 0800 will get you to the center of the race at 1130 (at a boat speed of 4 knots), which is just after slack. After 1130 the flood tide will start to push you towards Long Island - at 1224, the current is 2.5 knots, 1324 is 3.6 knots, and max is at 1424 at 4.0 knots.

Accommodations

Fisher Island Yacht Club (FIYC) will host the BYC fleet during our visit.

FIYC has dock space for rent through Dockwa, starting on April 15. BYC members who want to reserve dock space should make reservations via Dockwa as soon as possible following 4/15. When making those reservations, cruisers should include a note indicating they are part of the visiting group

from BYC. General Manager Russ Piper will assign dock space to BYC members on a first-come, first-served basis. Cruisers can also contact Russ at rpiper@fiyc.net or via phone after May 1 at 631.788.7036 and state that they are with BYC.

To contact the FIYC, either because you are arriving at the harbor and have dock space reserved or for any other reason, hail them on VHF CH 10 or call the marina office at (631)788-7036

There are five transient moorings available for rent at Pirate Cove Marine on a first-come, first-served basis. Weather permitting, each mooring can accommodate two boats rafted together. Additionally, there is a large anchorage with excellent holding ground, most of which is about 15 feet deep.

FIYC offers a dinghy dock and launch service, which closes at 1800. The facility also features bathrooms, showers, and an ice maker for the use of members and marina guests. Fuel is available M-F 0800 to 1630 and Sat 0900 to 1300. It is unlikely that pumpout service will be available when we are on Fishers Island. Mystic River Pumpout services the Island only periodically. When they are present, they can be hailed on VHS Channel 68. However, as that is unlikely, it is recommended that you get pumpout service before arriving at Fishers Island.

The Village Market is a grocery store located at 446 Crescent Ave, Fishers Island, NY 06390 (631-788-7255). They are open from 0730 to 1700.

Gatherings

On Thursday, July 17, we'll have a potluck gathering at the FIYC from 1700 to 1900. There is a fee to use the FIYC for this gathering; we will "pass the hat" during this gathering to collect donations to cover this fee. A donation of \$15 will cover the cost. Please bring cash. FIC has tables and benches, but BYC cruisers with folding chairs are asked to bring those along as well. There will be a Drink-of-the-Day (Blue Heaven) at the potluck dinner.

On Friday, July 18, BYC cruisers are on their own for dinner. If interested, cruisers could walk the ½ mile to the Pequot Inn (246 Montauk Ave, Fishers Island, NY 06390), which opens at 1700, offers casual dining, and does not accept reservations. If interested, we can call The Pequot Inn the day of to let them know how many from BYC will come for dinner.

Activities

Henry L. Ferguson Museum – [link](#)

Annual Fishers Island Eel Grass Boat Tour – [link](#)

Hiking - [link](#)

Bike Rental – [link](#)

The West End Café - [link](#)

The Food Arts Café - [link](#)

Dutch Harbor

Getting There

Distance: 34.5 NM. It is approximately 24.8 NM from Fishers Island Yacht Club to Point Judith Point and another 9.3 NM from Point Judith Point to Dutch Harbor.

Tides/Currents: High tide at Wicopesset Island, just off the east end of Fishers Island and around 5 NM from the mooring/anchorage area off Fishers Island Yacht Club, is at

0550. After that the ebb tide flows southeast and east out of Long Island Sound and along the coast of CT and RI towards Point Judith until 1225. After 1225 a flood tide should carry cruisers north into Dutch Harbor until 1508 or shortly thereafter.

Assuming an average cruising speed of 5 knots if cruisers depart the area around Fishers Island Yacht Club around 0730, they should arrive at Point Judith Point around 1230, in time to ride a favorable current carrying them north to Dutch Harbor for another two hours to arrive around 1445.

Accommodations

Rental moorings are available through the Dutch Harbor Boat Yard via Dockwa. There is also an anchorage area at the north end of Dutch Harbor. The Boat Yard provides launch service, WiFi, bathrooms and showers, laundry, and a dumpster for trash disposal. There is also a dinghy dock available to all. Upon arrival in the harbor, hail the Dutch Harbor Boat Yard on VHF CH 69 to be directed to your mooring.

Gatherings

We will gather at the Dutch Harbor Boat Yard's patio and picnic table area at 1730 for cocktails and dinner. The Drink-of-the-Day, Gin & Tonic, will be served, and pizza and salad will be delivered for our meal. Money will be collected on-site to pay for the pizza. Please bring cash if you plan to opt into the pizza and salad order.